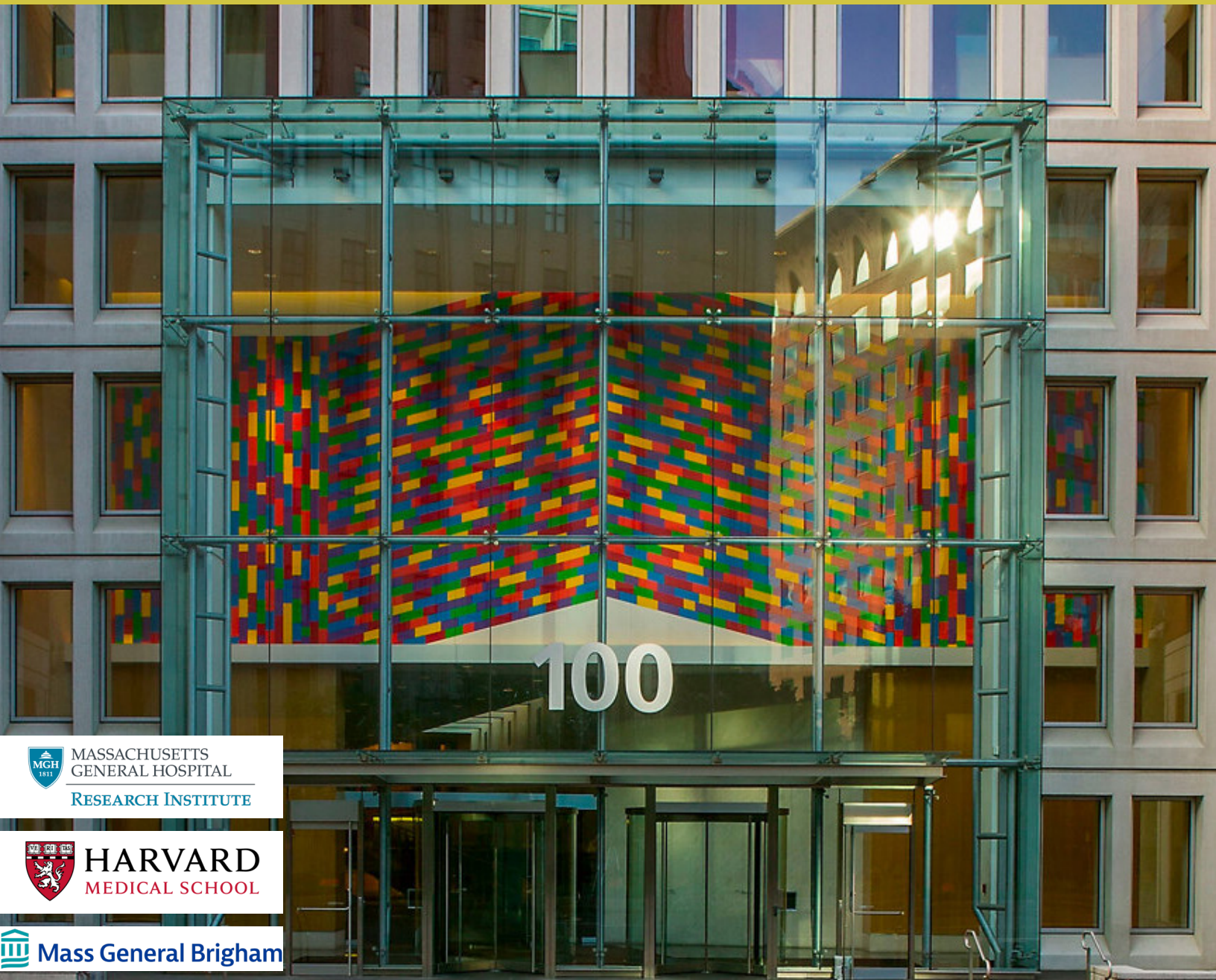


# MONGAN INSTITUTE

## 2021-2022 IMPACT REPORT



MASSACHUSETTS  
GENERAL HOSPITAL  
RESEARCH INSTITUTE



HARVARD  
MEDICAL SCHOOL



Mass General Brigham



# THE MONGAN INSTITUTE

## EXECUTIVE SUMMARY

---

This Impact Report provides an overview of selected accomplishments of the research faculty and staff of the Mongan Institute spanning the academic years of 2021 to 2022.

**Our Mission:** The Mongan Institute is dedicated to achieving health equity and improving the lives of people with complex health needs through research and training in population and health care delivery team science.

**Mongan Institute Growth:** The Mongan Institute has grown considerably from its inception in 1998 when it was initially established as a single health policy research center. A multi-center research institute was formally launched in 2018 consisting of 7 centers and 75 faculty and has since grown to incorporate 12 centers and over 145 research faculty. The Mongan Institute engages in translational population and health care delivery team science - spanning data science through epidemiology, predictive analytics, and health policy, to healthcare delivery science including intervention research, decision science and implementation science.

**Grant Funding:** Our annual grant funding as principal investigators has nearly doubled over the past four years, from approximately \$60 million in 2018, to over \$108 million in 2022. Over the past academic year, over 50% of research career development applications have been funded at each submission and over 35% of all project grants and related project grant submissions (ranging from 27% to 48% over the past five years). These rates substantially eclipse the national average of approximately 20% of NIH grant submissions achieving funding.

**Publications:** Mongan faculty authored 1701 publications in the 2020-2021 and 1662 publications in 2021-2022 over the respective academic years (September 1 - August 31). Common topics included research on COVID-19; health risk factors; cancer, HIV, cardiovascular disease, mental health, quality of life, and health disparities. Common methods included epidemiology, cross-sectional, retrospective, cohort, and prospective studies.

**Awards:** Selected faculty awards include 11 major awards from national foundations and institutes, 9 leadership appointments, 16 MGH/MGB research awards, and 7 awards for excellence in mentoring. In addition, the impact of our mentoring and a glimpse of the future of population and health care delivery science is reflected in 38 NIH mentored research career development (K) awards.

**Cross-Institute Initiatives:** In response to the COVID-19 pandemic, numerous team science research projects were initiated spanning epidemiology, clinical research, health services, prevention, and long-COVID. In addition, a cross-institute program on health disparities spans race/ethnicity; age; sexual orientation and gender identity; disability; mental health; community health; vulnerable populations; and health policy. New resources for researchers were developed spanning data science to delivery science.

**Education and Training Program:** The Mongan Institute features over 20 seminars and research meetings including center-specific meetings, institute-wide seminars such as K award mock reviews, research in progress presentations, seminars in implementation science, and the annual Blumenthal and Haddad lectures. In collaboration with the Department of Medicine, the Mongan Institute also sponsors a summer internship program for historically underrepresented undergraduate and graduate students.

**Communications and Dissemination:** Complementing our Mongan Institute website ([www.monganinstitute.org](http://www.monganinstitute.org)), a weekly and monthly Mongan Institute Update summarizes recent funding and training opportunities; along with highlights of accomplishments, awards, and accomplishments of Mongan faculty and staff. In 2022, a new social media initiative was launched, the Mongan Science Minute, which includes brief summaries of key findings and conclusions from selected recent publications by Mongan faculty.

**Upcoming Initiatives:** Over the coming year we will enhance our cross-institute infrastructure in three critical areas: research administration; new programs in research education and training, and a cross-institute program in data management and analytics - while furthering our commitment to diversity, equity, and inclusion and enhancing our team science research capacity.



# MONGAN INSTITUTE IMPACT REPORT 2021-2022

---

## TABLE OF CONTENTS

---

<b>REFLECTIONS FROM THE DIRECTOR</b>	
Message from Stephen Bartels, MD, MS	6
<b>THE MONGAN INSTITUTE AT A GLANCE</b>	
Mission, Vision, and Strategy	8
History of the Mongan Institute	8
Mongan Institute Centers and Programs	9
<b>FUNDING AND PUBLICATIONS</b>	
Grant Funding	16
Publications	16
<b>OUR ACCOMPLISHMENTS</b>	
Selected Awards and Leadership Accomplishments	18
MGRI, MGB and HMS Awards	20
Mentoring the Next Generation: K Awardees	22
Health Equity	25
COVID-19	26
Developing New Resources for Researchers	27
<b>EDUCATION, TRAINING, AND SEMINARS</b>	
Seminars	28
COVID Corps Summer Internship Program	30
Further Communicating our Impact	31
<b>LOOKING TOWARDS THE FUTURE</b>	
Enhance Cross-Institute Infrastructure	32
Research Training and Academic Program	32
Commitment to Diversity, Equity, and Inclusion	32
Synergize Team Science Research	33
Complete the Arc of Translational Research at MGH	34

# THE MONGAN INSTITUTE

## REFLECTIONS FROM THE DIRECTOR

---



Stephen Bartels, MD, MS

I am excited to introduce our 2021-2022 Mongan Institute Impact Report presenting highlights of the Mongan Institute’s high-caliber research and training in population and healthcare delivery science. In this overview you will see selected accomplishments by our faculty and staff during a time of extraordinary change in healthcare and in the way that we work. In addition to the global COVID-19 pandemic, we witnessed an unrelenting series of events bringing into bold relief long-standing disparities in health care access and health outcomes. It is in this context that the many accomplishments of the faculty and staff of the Mongan Institute are truly extraordinary.

In preparing this report, it was striking to consider how far we have come since the creation of the newly formed version of the Mongan Institute in 2018. Beginning with seven centers and approximately 75 faculty; we now consist of 12 centers and programs and over 145 faculty. Our annual grant funding as principal investigators has increased by 80%, from \$60 million in 2018, to over \$108 million in 2020. This growth reflects a success rate of approximately 35% of submissions in each grant cycle, substantially eclipsing the national average of approximately 20%. At the same time, our productivity in publications has skyrocketed to over 1600 peer-reviewed articles this past academic year spanning a wide range of healthcare conditions, topics, and research methods in population and health care delivery science.

Although these conventional measures of academic success are impressive, of far greater importance is the real-world impact of our research and training at the Mongan Institute. Guided by our core mission “dedicated to achieving health equity and improving the lives of people with complex health needs,” our program of research has expanded to advance knowledge on a broad spectrum of health disparities - spanning race and ethnicity, age, gender and gender minority health, disability, mental health, socioeconomic status, and social determinants of health. We have contributed to improving prevention and treatment of a broad array of health conditions ranging from chronic diseases including cardiovascular disease, stroke, and autoimmune disorders, to infectious diseases such as HIV and COVID-19. We have developed and evaluated new ways of delivering palliative care for advanced cancer and Alzheimer’s disease and approaches to improving outcomes for surgical and cardiac procedures through shared decision-making. At the level of health systems, we have applied innovative methods to inform practice by simulating cost-effectiveness of new treatment approaches, while also demonstrating the impact of specific health policies and approaches to health care financing on health outcomes. This report selectively highlights honors, awards, and accomplishments of our extraordinary research faculty who generate this high impact work including numerous recognitions and awards by our junior faculty as future leaders in our field, as well as awards by our mid-career and senior faculty guiding our priority of excellence in research training and mentoring. Our commitment to mentoring and developing the next generation of population and health care delivery scientists could not be more central to our mission, illustrated by the astonishing number of 38 NIH Mentored Career Development (K) Awards.

If there is anything that the past few years has taught us, it is impossible to predict the magnitude of events and new challenges to come. As I have come to appreciate the depth of expertise, innovation, and dedication of our leadership, faculty, and staff, I could not be more optimistic in our unique capacity to engage population and health care delivery team science to make a real difference. It is with deep gratitude, and as a tribute to the leadership, faculty, and staff of the Mongan Institute that this installment of the Mongan Institute Impact Report sets the stage for our future work creating real change and impact through population and health care delivery team science locally, nationally, and globally.



STEPHEN BARTELS, MD, MS  
*Director of the Mongan Institute*

# THE MONGAN INSTITUTE

## AT A GLANCE

---

### OUR MISSION

The Mongan Institute is dedicated to achieving health equity and improving the lives of people with complex health needs through research and training in population and health care delivery team science.

### OUR VISION

To rapidly generate transformative knowledge that improves health care delivery, population health, and health equity through an integrated program of translational research and training - spanning data science to delivery science and evaluative science to implementation science - in partnership with local, national, and international communities, collaborators, and health care systems.

### OUR STRATEGY

Foster inclusive research and training academic home for accelerated, population and health care delivery team science; train, recruit, and retain a diverse cadre of the best interdisciplinary researchers committed to transforming health care and achieving health equity for people with complex needs; and engage in productive, mutually beneficial, and sustainable partnerships with affiliated programs and national and international collaborators.

### HISTORY OF THE MONGAN INSTITUTE

The Mongan Institute is named in honor of Dr. James J. and Jean H. Mongan. Dr. Mongan was President and CEO of Partners HealthCare from 2003-2009, President of MGH from 1996-2002, and a professor of health care policy and social medicine at Harvard Medical School. He served on the board of trustees of the American Hospital Association and was a member of the Institute of Medicine of the National Academy of Sciences. Dr. Mongan passed away on May 3, 2011.



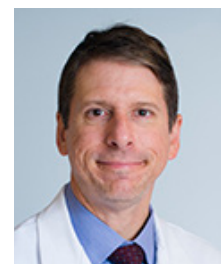
James Mongan, MD

The Mongan Institute of today consists of an array of centers that originated in 2016 through the vision and support of Dr. Katrina Armstrong, Chair of the Department of Medicine from 2013-2022. The initial launch of the Institute at MGH occurred over two decades ago with Dr. David Blumenthal who founded the Mongan Institute for Health Policy as a single research center dedicated to the study and advancement of health policy in 1998. Since its founding, the Institute has expanded its mission and membership to the current group of 12 centers and programs spanning a wide range of topics and methods in population and health care delivery science.



Katrina Armstrong, MD

The Mongan Institute is within the Department of Medicine at MGH and receives substantial support, sponsorship, and guidance from the Department of Medicine under the leadership of Interim Chief Joshua Metlay, MD, PhD, as well as support through numerous research awards and programs through the Massachusetts General Research Institute.

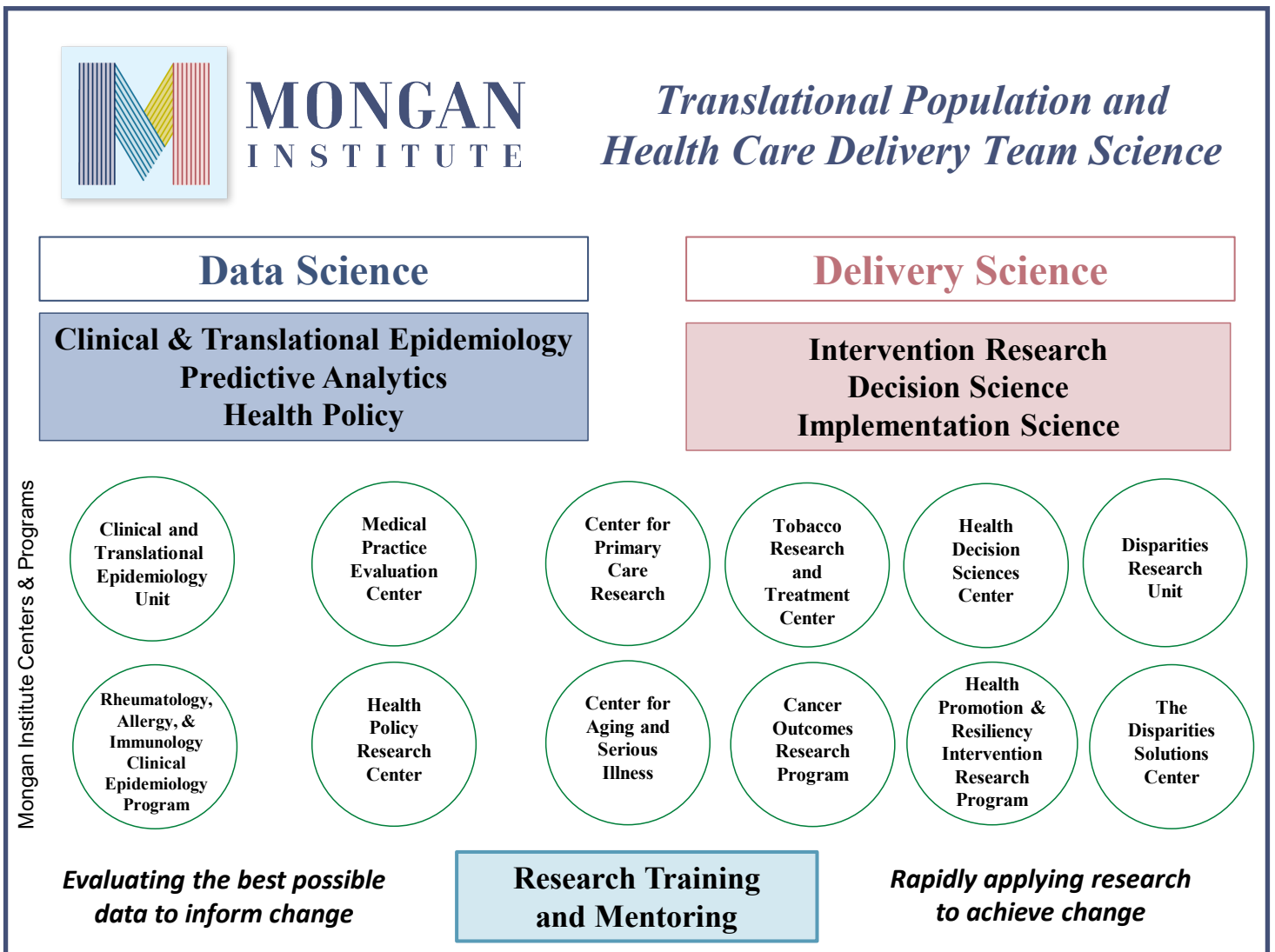


Joshua Metlay, MD, PhD



## MONGAN INSTITUTE CENTERS

The Mongan Institute currently consists of 12 centers and programs engaged in translational population and health care delivery team science - spanning data science through epidemiology, predictive analytics, and health policy, to healthcare delivery science including intervention research, decision science and implementation science. The Mongan Institute’s research centers and programs incorporate a broad array of methods aimed at solving the most challenging problems in health care by rapidly translating findings from data science to applied research achieving real-world change. Each center or program is an established leader in its field committed to transforming health care and advancing health equity for people with complex needs, as well as training the next generation of leaders in population and health care science.



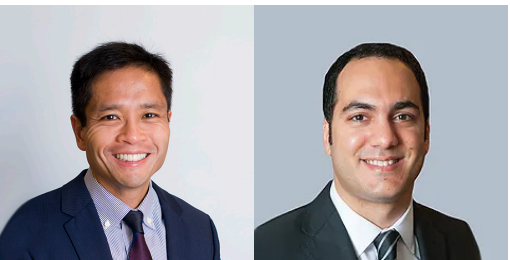
## CANCER OUTCOMES RESEARCH AND EDUCATION PROGRAM (CORE)



**JENNIFER TEMEL, MD AND JOSEPH GREER, PhD**  
**CO-DIRECTORS**

CORE conducts innovative research and educational programs to improve the experience and outcomes of patients and caregivers across the continuum of cancer care. This is a unique, collaborative research team with members from oncology, nursing, palliative care, psychiatry, and psychology, and given the breadth of experience as investigators and clinicians, the team is able to integrate multiple perspectives into a transdisciplinary research platform.

## CLINICAL AND TRANSLATIONAL EPIDEMIOLOGY UNIT (CTEU)



**ANDREW CHAN, MD, MPH AND HAMED KHALILI MD, MPH**

### **DIRECTOR AND ASSOCIATE DIRECTOR**

CTEU advances the translation of discoveries into effective clinical interventions in chronic disease through epidemiologic investigation. Researchers in this unit utilize, develop, and optimize innovative epidemiologic methods to discover and characterize determinants of human health, develop novel preventive and therapeutic interventions, and elucidate molecular biomarkers for the development of precision medicine strategies.

## CENTER FOR AGING AND SERIOUS ILLNESS (CASI)



**CHRISTINE RITCHIE, MD, MSPH**  
**DIRECTOR**

CASI brings together researchers from across MGH and the Boston area to conduct high-impact research aimed at improving the well-being of older adults and enhance the lived experience of those with advanced illnesses. CASI advances this mission by creating a pipeline developing the next generation of researchers studying key topics related to aging and serious illness by training investigators in the conduct of applied clinical studies, and by engaging in team science research initiatives both locally and globally.

## DISPARITIES RESEARCH UNIT (DRU)



**MARGARITA ALEGRÍA, PhD**  
**DIRECTOR**

The DRU is dedicated to undertaking innovative, collaborative research projects that focus on understanding and improving health services and eliminating health and health care disparities for diverse racial and ethnic and/or immigrant populations. Established at MGH in 2015, the DRU employs state of the art research methods and statistical approaches and develops and tests interventions that can be adopted and implemented in real-world low-resource settings.

## DISPARITIES SOLUTIONS CENTER (DSC)



**ASWITA TAN-McGRORY, MBA, MSPH**

### **DIRECTOR**

The DSC is dedicated to the development and implementation of strategies that advance policy and practice to improve quality, eliminate racial and ethnic disparities, and to achieving equity in health care in a time of rapid transformation. The goal of the DSC is to develop and disseminate models by providing training to health care providers and health systems aimed at improving quality and identifying and addressing racial and ethnic disparities in health care at the national and local levels.

## HEALTH DECISION SCIENCES CENTER (HDSC)



**KAREN SEPUCHA, PHD**

### **DIRECTOR**

The HDSC is a multidisciplinary research group that seeks to foster shared decision making and implement sustainable decision aid delivery, committed to improving the quality of decisions made by patients and health care providers from diagnosis through treatment. The mission of the HDSC is to create conversations and systems of care that value the expertise of patients, families, and clinicians, and incorporate the best available clinical evidence.

## DIVISION OF GENERAL INTERNAL MEDICINE/CENTER FOR PRIMARY CARE RESEARCH (DGIM)



**JENNIFER HAAS, MD, MSc**

### **DIRECTOR**

Researchers in the DGIM focus on a full range of topics from preventive medicine and population health to improving patient care and managing chronic disease. This center encompasses more than 400 general medicine physicians with world-renowned programs in teaching and training, research, clinical practice, hospital medicine, consultative medicine, global health, innovation, and scholarship.

## HEALTH POLICY RESEARCH CENTER (HPRC)



**STEPHEN BARTELS, MD, MS**

### **DIRECTOR**

HPRC conducts health policy research and provides training on the impact of different models of financing, policy, and health care delivery with a specific focus on low-income, vulnerable, and marginalized populations. Through affiliations with Mass General, MGB, and health care systems across the nation, the researchers of HPRC translate research results directly from academic settings to clinical practice and identify leading-edge issues affecting health care efficiency and quality.

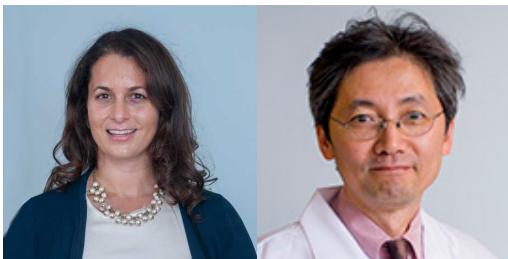
## HEALTH PROMOTION AND RESILIENCY INTERVENTION RESEARCH PROGRAM (HPRIR)



**ELYSE PARK, PHD**  
**DIRECTOR**

Mongan Institute's newest center, the Health Promotion and Resiliency Intervention Research Center (HPRIR) Center is a joint initiative between the Mongan Institute and the MGH Department of Psychiatry supporting research and training in interdisciplinary behavioral health services aimed at enhancing health, wellness, and resiliency.

## RHEUMATOLOGY, ALLERGY, AND IMMUNOLOGY CLINICAL EPIDEMIOLOGY PROGRAM (RAICEP)



**KIM BLUMENTHAL, MD, MSc, AND HYON CHOI, MD, DRPH**

### CO-DIRECTORS

RAICEP conducts research and training focused on allergic and rheumatologic diseases using clinical research methods that include advanced informatics, clinical epidemiology, primary data collection, and simulation science. Their team has multidisciplinary and far-reaching collaborations that have led to scientific advancements and high impact, highly cited publications.

## MEDICAL PRACTICE EVALUATION CENTER (MPEC)



**KENNETH FREEDBERG, MD, MSc, AND INGRID BASSETT, MD, MPH**

### CO-DIRECTORS

MPEC works to improve clinical outcomes and inform global public health through research, collaboration, and education. MPEC is an internationally recognized, multidisciplinary team conducting research and training in the evaluation of clinical outcomes and simulation modeling for the cost-effectiveness of interventions for preventing and managing HIV/AIDS and other diseases.

## TOBACCO RESEARCH AND TREATMENT CENTER (TRTC)



**NANCY RIGOTTI, MD**  
**DIRECTOR**

TRTC aims to reduce the toll of tobacco-related disease by identifying innovative tobacco cessation treatments, promoting the delivery of effective treatment in the health care delivery system, and evaluating the impact of tobacco control public policies. Using randomized controlled trials and other empirically based research designs, investigators develop and implement interventions for hospitalized smokers and for smokers in outpatient primary care, prenatal care, oncology, and psychiatric practices.

## RESEARCH AND ACADEMIC AFFILIATES

### MASS GENERAL RESEARCH INSTITUTE (MGRI)

The MGH Research Institute oversees the largest hospital-based research program in the United States and is home to research across 30 departments and institutes- including the Mongan Institute. Over the past several years, MGRI has worked with the Mongan Institute to revise its established translational research mission “from bench to bedside” to include “community and population.” In addition, MGRI has worked with the Mongan Institute to expand funding opportunities through the MGH Executive Committee on Research, adding to awards and programs a specific category of awards and funding opportunities dedicated to population and health care delivery research.

(<https://www.massgeneral.org/research>)



MASSACHUSETTS  
GENERAL HOSPITAL

RESEARCH INSTITUTE

### HARVARD T.H. CHAN SCHOOL OF PUBLIC HEALTH

Harvard T.H. Chan School of Public Health is an independent, degree-granting body consisting of numerous research departments, centers, and programs bringing together dedicated experts from diverse disciplines to educate new generations of research leaders and produce novel ideas to benefit the lives and health of people everywhere. Many Mongan Institute Senior Faculty hold secondary appointments at HSPH and with other Mongan faculty contribute to teaching and mentoring of HSPH Master’s Degree, PhD, post-doctoral trainees, as well as contributing to clinical and public health research training programs and research collaborations.

(<https://www.hsph.harvard.edu/>)



**HARVARD**  
**T.H. CHAN**  
SCHOOL OF PUBLIC HEALTH

### MASS GENERAL HOSPITAL INSTITUTE OF HEALTH PROFESSIONS

The MGH Institute of Health Professions (IHP), founded in 1977 by Massachusetts General Hospital, is the only degree-granting affiliate of Mass General Brigham. As an independent, interprofessional graduate school of health sciences, IHP prepares health professionals and scientists to advance care for a diverse society through leadership in education, clinical practice, research, and community engagement. This partnership includes IHP faculty and trainee as affiliated members of the Mongan Institute, including contributing to research training seminars and engaging in research collaborations, as well as participating seminars, and receiving research mentoring from Mongan Institute faculty.

(<https://www.mghihp.edu/>)



**MGH INSTITUTE**  
OF HEALTH PROFESSIONS

## RESEARCH AND ACADEMIC AFFILIATES

**CENTER FOR GLOBAL HEALTH (CGH) – LOUISE C. IVERS, MD, MPH (EXECUTIVE DIRECTOR),  
JESSICA HABERER, MD, MS (DIRECTOR, GLOBAL HEALTH RESEARCH)**

The Center for Global Health (CGH) engages in global health programs, disaster response programs, global health education and training programs, and global health research with numerous partnerships, including the Mass General Global Health Research Collaborative developed in partnership with leaders at CGH, the Mongan Institute, and global health researchers across MGH, aimed at advancing interdisciplinary research partnerships to generate knowledge that will positively influence the health of underserved populations globally.

(<https://globalhealth.massgeneral.org/ourwork-items/globalhealthresearch/>)



**LOUISE C. IVERS, MD, MPH**  
Executive Director, Center for Global Health



**JESSICA HABERER, MD, MS**  
Director, Global Health Research,  
Center for Global Health

**MASS GENERAL BIostatISTICS – ANDREA FOULKES, SCD (DIRECTOR)**

Mass General Biostatistics includes over 70 faculty and staff who work in diverse domains across 25 divisions and departments at MGH to develop, evaluate and apply rigorous statistical and data science methods across a broad spectrum of research areas engaging in impactful transdisciplinary collaborations involving quantitative methods in public health and biomedicine. Dr. Andrea Foulkes (Director of Mass General Biostatistics) is a member of the leadership and faculty of the Mongan Institute. In addition, some faculty share appointments in Mass General Biostatistics and the Mongan Institute to mutually advance research methods and biostatistical analytic efforts in population and health care delivery science.

(<https://biostatistics.massgeneral.org/>)



**ANDREA FOULKES, SCD**  
Director, Mass General Biostatistics

## RESEARCH AND ACADEMIC AFFILIATES

### **CODMAN CENTER FOR CLINICAL EFFECTIVENESS IN SURGERY – DAVID CHANG, PHD, MPH, MBA (DIRECTOR OF HEALTH CARE RESEARCH AND POLICY DEVELOPMENT)**

The The Codman Center was established in 2002 by the Department of Surgery to lead surgical outcomes research at MGH. The Codman Center specializes in conducting research and training leveraging surgical quality databases and clinical registries with a focus on improving quality and appropriateness of procedures, cost-effectiveness of surgical care, and surgical care outcomes. Collaborations between the Codman Center and the Mongan Institute include developing collaborative research training and mentoring programs for early-stage investigators.

<https://www.massgeneral.org/surgery/codman-center>



**DAVID CHANG, PHD, MPH, MBA**  
Director, Health Care Research and Policy Development,  
Codman Center for Clinical Effectiveness in Surgery

### **MUNN CENTER FOR NURSING RESEARCH – GAURDIA BANISTER, PHD, RN, NEA-BC, FAAN (DIRECTOR)**

The Yvonne L. Munn Center for Nursing Research promotes innovation, funding, and development to support nursing research aimed at advancing clinical practice and optimize quality patient-centered outcomes. Collaborations between the Munn Center and the Mongan Institute include co-mentoring early career nurse scientists and helping to advance nurse faculty research scholarship and academic promotion in the area of population and health care delivery research and interdisciplinary team science.

<https://www.mghpcs.org/munncenter/Contact.asp>



**GAURDIA BANISTER, PHD, RN, NEA-BC, FAAN**  
Director, Munn Center for Nursing Research

# THE MONGAN INSTITUTE

## FUNDING AND PUBLICATIONS

### GRANT FUNDING

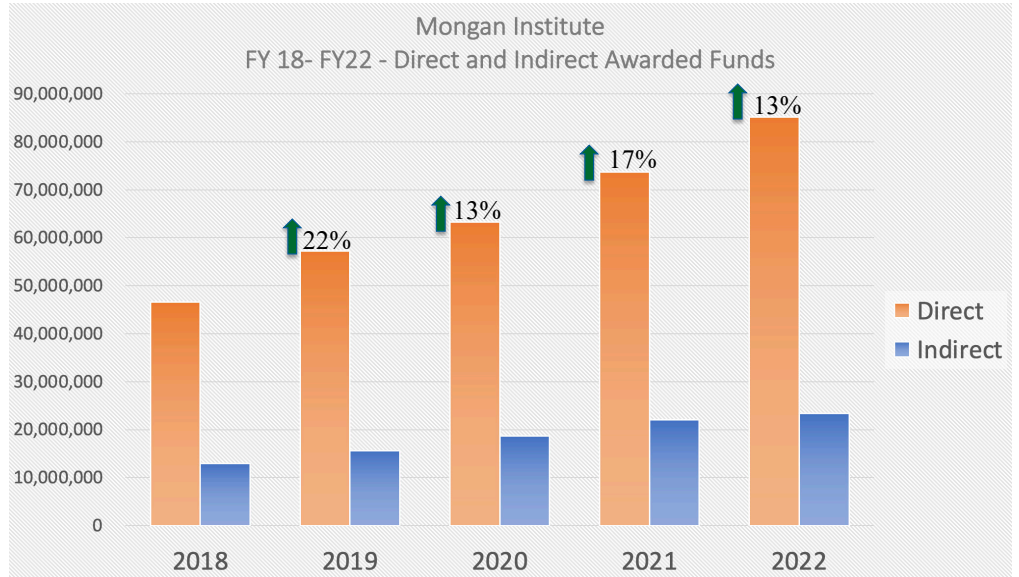
Our annual grant funding as principal investigators has nearly doubled over the past four years, growing from approximately \$60 million in 2018, to over \$108 million in 2022. Over the past academic year our success rate in achieving grant funding in over 50% of research career development applications and exceeded 35% of submissions achieving funding on submission (ranging from 27% to 48% over the past five years) which dramatically eclipsed the national average of approximately 20%.

### PUBLICATIONS

Mongan faculty published 1701 publications in the 2020-2021 academic year (September 1, 2020-August 31, 2021) and 1662 publications in the 2021-2022 academic year (September 1, 2021-August 31, 2022). The word cloud on the next page, derived from keywords in these publications, illustrates the linkages between topics across publications from the 2021-2022 academic year.

### Mongan Faculty Grant Funding (as PI)

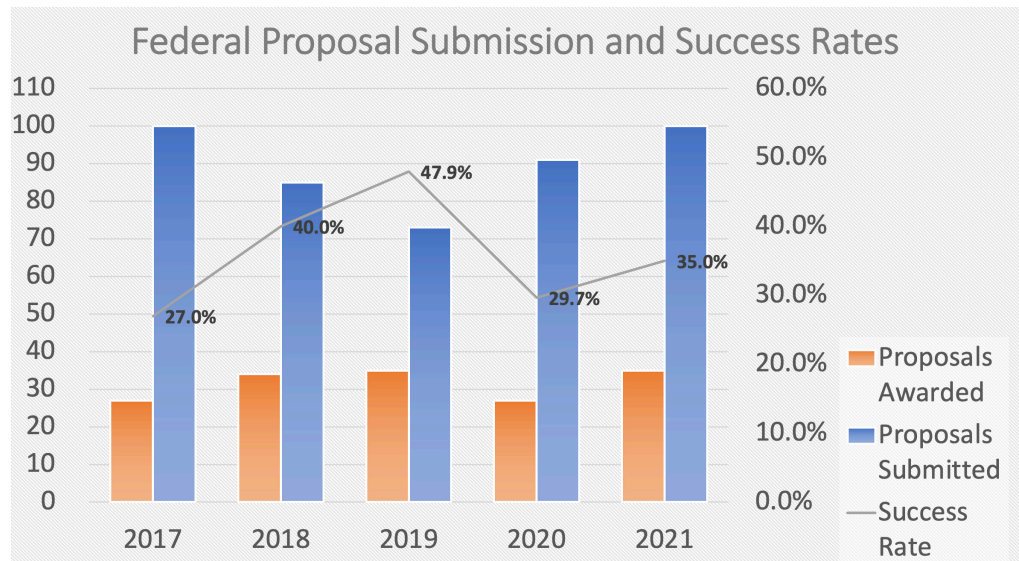
FY 2020= \$82M    FY 2021 \$95M  
 FY2022= \$108.5M



### Mongan Faculty Federal Proposal Submissions

Overall Success Rates exceed 35%  
 (MGH wide=25%)

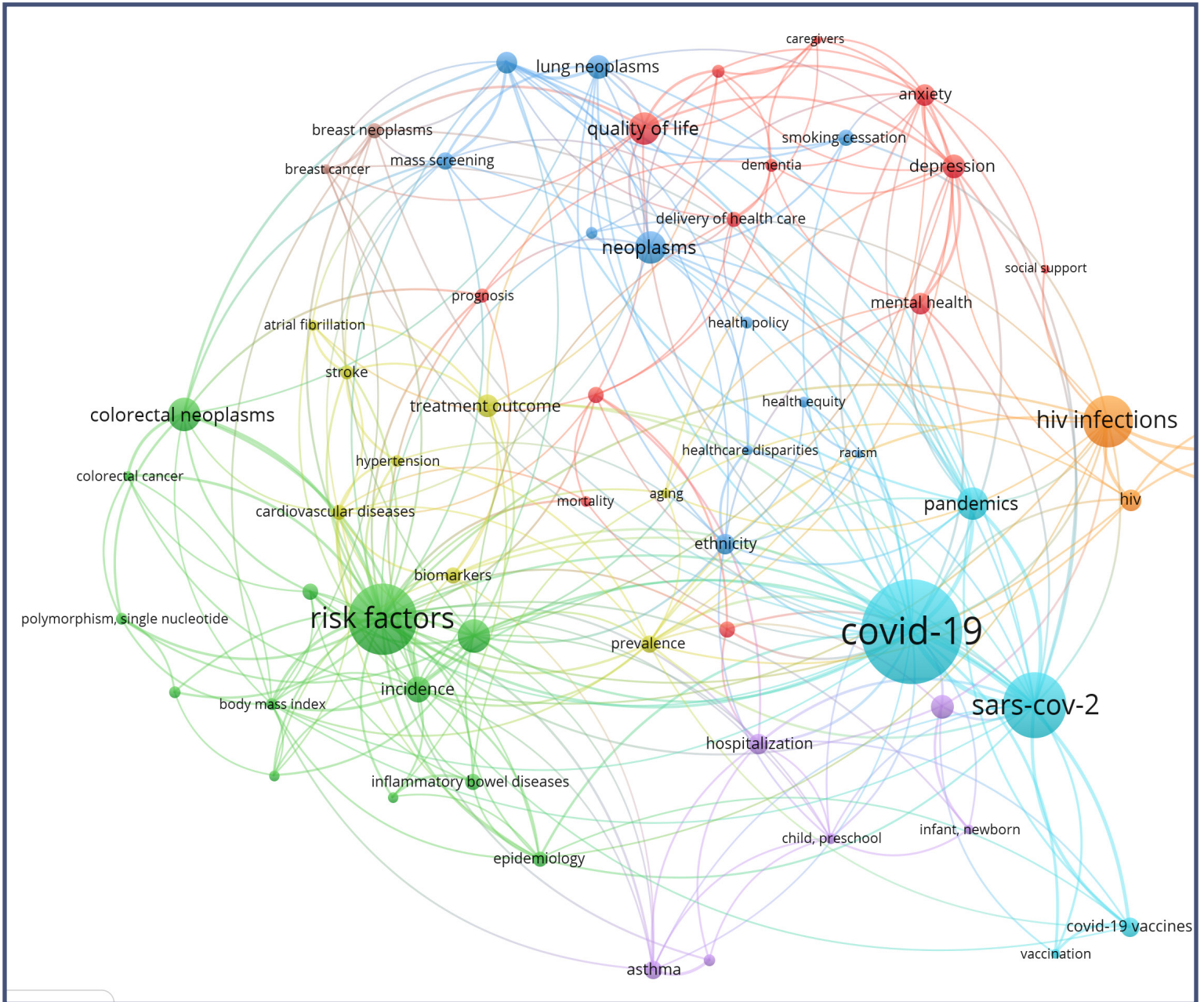
(n=333 Grant Submissions 9/1/2021-8/31/2022)





# MOST COMMON TOPICS CITED IN MONGAN RESEARCH PUBLICATIONS

1,662 PUBLICATIONS 9/1/2021 —8/31/2022



## THE MONGAN INSTITUTE FACULTY ACCOMPLISHMENTS

As a reflection of the depth, breadth, and expertise of Mongan Institute scientists, our faculty have been recognized by numerous advancements and awards over 2021-2022. Below we selectively highlight a sample of these distinctions received by junior, mid-career, and senior faculty.

### NATIONAL AWARDS AND SELECTED RECOGNITIONS

- ▶ **American Cancer Society Research Professorships** awarded to **Jennifer Temel, MD (2020-2025)**, **Andrew Chan, MD, MPH (2022-2027)**, and **Jennifer Haas MD, MSPH (2022-2027)**.
- ▶ **Lisa Iezzoni, MD, MSc** received the **2022 American Public Health Association Disability Section Lifetime Achievement Award** and was named a **2022-2023 Harvard Radcliffe Institute Fellow**.
- ▶ **Margarita Alegría, PhD** received the **2021 Lifetime Achievement Award for Latino Behavioral Health Research from The National Latino Behavioral Health Association** and the **2022 Inclusive Voices Award and Selected as a "Champion of Mental Health Equity."**
- ▶ **Altaf Saadi, MD, MSc** was selected as a **"40 under 40 Leaders in Minority Health"** Award recipient from the **National Minority Quality Forum (NMQF)**.
- ▶ **Fatima Cody Stanford, MD, MPH, MPA, MBA** was named a **National Academy of Medicine Scholars in Diagnostic Excellence of 2022**.
- ▶ **Daniel Singer, MD** received the **2021 John M. Eisenberg Award from the Society for Medical Decision Making**.
- ▶ **Esther Freeman, MD, PhD, FAAD** received the **2021 Presidential Citation Award from the American Academy of Dermatology**.



Jennifer Temel, MD



Andrew Chan, MD,  
MPH



Jennifer Haas, MD,  
MSPH



Lisa Iezzoni, MD, MSc



Margarita Alegría, PhD



Altaf Saadi, MD, MSc



Fatima Cody Stanford,  
MD, MPH, MPH, MBA



Daniel Singer, MD



Esther Freeman, MD,  
PhD, FAAD

## SELECTED LEADERSHIP ACCOMPLISHMENTS

- ▶ **Margarita Alegría, PhD** (*Center Director*) appointed as the inaugural **Harry G. Lehnert, Jr. and Lucille F. Cyr Endowed MGH Research Institute Chair** by the Research Institute Steering Committee due to a generous and visionary gift from the Harry G. Lehnert, Jr. Trust to foster and accelerate scientific knowledge and discovery at Mass General.
- ▶ **Michael Barry, MD** appointed as **Vice Chair of the U.S. Preventive Services Task Force (Task Force)**. The Task Force is an independent, volunteer panel of national experts in prevention and evidence-based medicine. His tenure as vice chair will be followed by his role as chair starting in 2023.
- ▶ **Ingrid Bassett, MD, MPH** (*Center Director*) named Co-Director of the Medical Practice Evaluation Center at the Mongan Institute.
- ▶ **Joseph Betancourt, MD, MPH**, founder of the Disparities Solutions Center at the Mongan Institute, named the inaugural **Senior Vice President for Equity and Community Health at MGH**. In 2023, Dr. Betancourt will assume the role of **President of the Commonwealth Fund**; succeeding **David Blumenthal, MD**, founder of the original “Mongan Institute for Health Policy.”
- ▶ **Allison Bryant, MD, MPH** appointed as **The Frederic D. Frigoletto, MD Endowed Chair in Obstetrics and Gynecology at Massachusetts General Hospital** in recognition of Dr. Bryant’s clinical excellence and commitment to her patients as well as her commitment to and success in advancing diversity, equity, and inclusion efforts in our department, at our hospital, and across our state and country.
- ▶ **Karen Donelan, ScD, EdM**, Senior Scientist at the Health Policy Research Center at the Mongan Institute, named the inaugural **Stuart H. Altman Chair in U.S. Health Policy at Brandeis University’s Heller School for Social Policy and Management**.
- ▶ **Elyse Park, PhD** (*Center Director*) named as the inaugural **Director of the Health Promotion and Resiliency Intervention Research (HPRIR) Program**.
- ▶ **Jason Hagan, MSM** named **Administrative Director of the Mongan Institute**, succeeding **Aswita Tan-McGrory, MBA, MSPH** (*Center Director*), Director of the Disparities Solutions Center, who assumed the position of **Administrative Director of Research, the Department of Medicine**.



Michael Barry, MD



Joseph Betancourt,  
MD, MPH



Allison Bryant, MD,  
MPH



Karen Donelan, ScD,  
EdM



Jason Hagan, MSM

## MASS GENERAL RESEARCH INSTITUTE AND MASS GENERAL BRIGHAM RESEARCH AWARDS

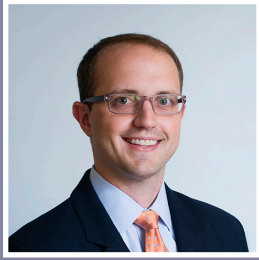
- ▶ **Jacqueline Seiglie, MD, MSc** received the **2022 MGH Martin Prize for Population Health Sciences**. The Martin Research Prize is awarded by the Executive Committee on Research to recognize outstanding research achievements published by MGH investigators.
- ▶ **Travis Baggett, MD, MPH (2021-2026), Olivia Okereke, MD, MS (2021-2026), and Andrea Ciaranello, MD, MPH (2022-2027)** received the **MGH Research Scholar Award**. The MGH Research Scholars program is awarded to outstanding MGH research faculty who are pursuing research at the level of Assistant and Associate Professor.
- ▶ **Efren Flores, MD (2021) and Jacqueline Seiglie, MD, MSc (2022)** received the **MGH Physician Scientist Development Award**. The MGH Physician/Scientist Development Award is designed for MD and/or PhD investigators at MGH to provide transitional funding for support in the development of physicians and/or scientists who are considered underrepresented in academic medicine (UIM).
- ▶ **Emily Hyle, MD, MSc (2021-2022), Tracey Simon, MD (2021-2022), Margaret Samuels-Kalow, MD, MSHP (2021-2022), Sahar Zafar, MD (2021-2022), Sara Barmettler, MD (2022-2023), and Kathleen Corey, MD (2022-2023)** named **Anne Klibanski Visiting Scholars**. This award is presented to women faculty clinicians, educators, researchers, and postdocs who have shown exceptional promise as leaders in their field and whose careers benefit from speaking, mentoring, and networking opportunities.
- ▶ **Jamie Jacobs, PhD (2021-2022), Lidia Moura, MD (2021-2022), Anne Neilan, MD, MPH (2022-2023), and Altaf Saadi, MD, MSc (2022-2023)** named **MGH Claffin Distinguished Scholars**. It is intended that this transitional funding will increase opportunities for women to advance to senior positions in academic medicine.

## FACULTY AWARDS FOR EXCELLENCE IN MENTORING

- ▶ **Fatima Cody Stanford MD, MPH, MPA, MBA (2021), Kimberly Blumenthal, MD, MSc (2022) and Vicki Fung, PhD (2022)** received the **Harvard Medical School Young Mentor Award**. The Young Mentor Award recognizes faculty who are outstanding mentors, are still in the early stages of their career, yet devote their time to providing guidance to others.
- ▶ **Alexander Tsai, MD** received the **2022 Stephanie Robert Mentoring Award from the Interdisciplinary Association for Population Health Science (IAPHS)**. This award is given annually to recognize an outstanding mentor who has given time and dedication as a mentor and in so doing, has made a significant positive impact on the intellectual and professional development of emerging scholars in IAPHS.
- ▶ **Kenneth Freedberg, MD, MSc (2021) (Center Director) and Ana-Maria Vranceanu, PhD (2022)** received the **MGH Excellence in Mentoring-Ally for Women Faculty Award**. Sponsored by the Center for Faculty Development (CFD), this is one of the six CFD Excellence in Mentoring Awards to recognize and honor the mentoring contributions and to further build a "culture of mentoring" at MGH.
- ▶ **Margarita Alegria, PhD (Center Director)** received the **2022 MGH Outstanding Mentor of Underrepresented in Medicine Faculty and Trainees Award**. This award is given to a faculty member who serves as a strong collaborator, mentor, and sponsor of UIM faculty and trainees.



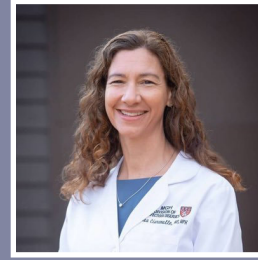
Jacqueline Seigle, MD,  
MSc



Travis Baggett, MD,  
MPH



Olivia Okereke, MD,  
MS



Andrea Ciaranello, MD,  
MPH



Efren Flores, MD



Emily Hyle, MD, MSc



Tracey Simon, MD



Margaret Samuels-  
Kalow, MD, MSPH



Sahar Zafar, MD



Sara Barnettler, MD



Kathleen Corey, MD



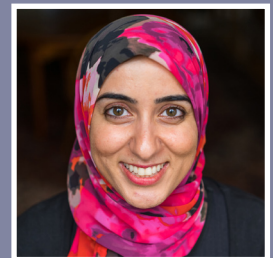
Jamie Jacobs, PhD



Lidia Moura, MD



Anne Neilan, MD, MPH



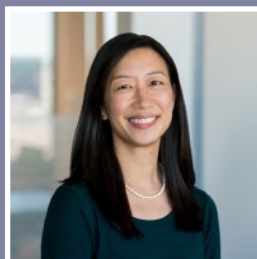
Altaf Saadi, MD MSc



Fatima Cody Stanford,  
MD, MPH, MPH, MBA



Kimberly Blumenthal,  
MD, MSc



Vicki Fung, PhD



Alex Tsai, MD

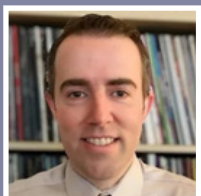


Ana-Maria Vranceanu,  
PhD

## MENTORING THE NEXT GENERATION: NIH RESEARCH CAREER DEVELOPMENT AWARDS

Below is a list of the 38 Career Development (K) Awards at the Mongan Institute (Active 2021-2022):

- ▶ **Jeffrey Ashburner, PhD, MPH (DGIM)** was awarded funding for the project *Identifying primary care patients at increased risk of atrial fibrillation for screening interventions* (2019-2024)
- ▶ **Aderonke Bamgbose Pederson, MD (DRU)** was awarded funding for the project *Design and Feasibility of a Mobile Mental Health Stigma Reducing Intervention towards Optimization of Care for Black Adults with Depression and Anxiety* (2022-2027)
- ▶ **Sara Barmettler, MD (RAICEP)** was awarded funding for the project *Modeling Risk for Hypogammaglobulinemia, Infections, and Mortality with Chimeric Antigen Receptor (CAR) T-cell Therapy* (2021-2026)
- ▶ **Lisa Bebell, MD (MPEC)** was awarded funding for the project *HIV Infection, Placental Inflammation, and Early Childhood Outcomes in HIV-exposed, Uninfected Infants in Uganda* (2019-2023)
- ▶ **Kristin Burke, MD (CTEU)** was awarded funding for the project *Diet and metabolic factors in the pathogenesis of microscopic colitis* (2022-2026)
- ▶ **Jocelyn Carter, MD, MPH (DGIM)** was awarded funding for the project *Implementing a digitally-enabled community health worker intervention for patients with heart failure* (2020-2024)
- ▶ **Sevdenu Cizginer, MD, MPH (CASI)** was awarded funding for the project *Optimizing care for older surgical patients: a theory-guided implementation science approach* (2022-2027)
- ▶ **David Drew, PhD (CTEU)** was awarded funding for the project *Impact of Aspirin on the Gut Microbiome and Mucosal Microenvironment* (2020-2024)
- ▶ **Caitlin Dugdale, MD (MPEC)** was awarded funding for the project *Modeling the Effects of HIV, Chlamydia, and Gonorrhea in Mother-Infant Pairs in Botswana* (2020-2025)
- ▶ **Efren Flores, MD (Department of Radiology)** was awarded funding for the project *Health Opportunities & Promoters of Equitable Screening for Lung Cancer (Hopes for Lung Cancer)* (2023-2028)
- ▶ **Esther Freeman, MD, PhD (MPEC)** was awarded funding for the project *Antibody Profiles and Genetics of Pernio-Like Lesions during the COVID-19 pandemic* (2021-2023)
- ▶ **Daniel Hall, PhD (HPRIR)** was awarded funding for the project *A Multimodal Mind-Body Intervention for Fear of Recurrence among Cancer Survivors* (2019-2024)
- ▶ **Leland Hull, MD, MPH (DGIM)** was awarded funding for the project *Elucidating the barriers and facilitators to widespread implementation of preconception genetic carrier screening* (2022-2027)
- ▶ **Kelly Irwin, MD (CORE/HPRIR)** was awarded funding for the project *Reducing Disparities in Underserved Patients with Cancer and Serious Mental Illness* (2018-2023)



Jeffrey Ashburner,  
PhD, MPH



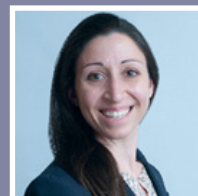
Aderonke Bamgbose  
Pederson, MD



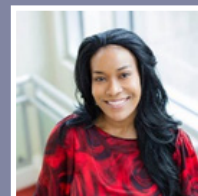
Sara Barmettler,  
MD



Lisa Bebell, MD



Kristin Burke, MD



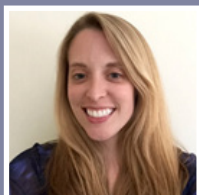
Jocelyn Carter,  
MD, MPH



Sevdenu Cizginer,  
MD, MPH



David Drew, PhD



Caitlin Dugdale,  
MD



Efren Flores, MD



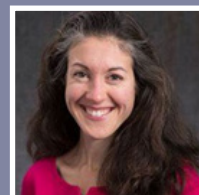
Esther Freeman,  
MD, PhD



Daniel Hall, PhD

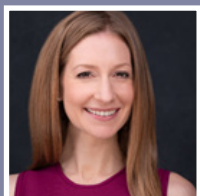


Leland Hull, MD,  
MPH

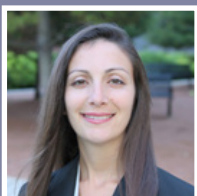


Kelly Irwin, MD

- ▶ **Jamie Jacobs, PhD (CORE)** was awarded funding for the project *Improving Adherence to Endocrine Therapy in Breast Cancer Survivors* (2017-2023)
- ▶ **April Jorge, MD (RAICEP)** was awarded funding for the project *A Personalized, Patient-Centered Approach to Optimizing Lupus Care* (2021-2026)
- ▶ **Christina Luberto, PhD (HPRC)** was awarded funding for the project *Mindfulness-Based Cognitive Therapy Delivered via Group Videoconferencing for Acute Coronary Syndrome Patients with Elevated Depression Symptoms* (2018-2023)
- ▶ **Ryan Mace, PhD (Center for Health Outcomes and Interdisciplinary Research)** was awarded funding for the project *My Healthy Brain: a mindfulness-based lifestyle intervention to modify early risk of dementia in older adults* (2022-2027)
- ▶ **Jennifer Manne-Goehler, MD, ScD (MPEC)** was awarded funding for the project *Preventing Weight Gain and Diabetes in People with HIV in South Africa* (2020-2025)
- ▶ **Suzanne McCluskey, MD (MPEC)** was awarded funding for the project *Virologic and pharmacologic determinants of dolutegravir failure in East Africa* (2018-2023)
- ▶ **Natalie McCormick, PhD (RAICEP)** was awarded funding for the project *Metabolic syndrome, chronic inflammation, and gout: a multi-omics approach* (2022-2024)
- ▶ **Jessica McCurley, PhD, MPH (Department of Psychiatry)** was awarded funding for the project *Be Well at Work-Plus: Engaging low-wage workers in the design and implementation of a depression and physical activity intervention* (2021-2026)
- ▶ **Alex McDowell, PhD, MPH, MSN, RN (HPRC)** was awarded funding for the project *Policy effects on gender minority health and evidence from the implementation of gender affirming coverage in Medicaid* (2022-2027)
- ▶ **Amir Mohareb, MD (MPEC)** was awarded funding for the project *Simulation Modeling of Hepatitis B Virus Elimination Strategies in Cote d'Ivoire* (2022-2027)
- ▶ **Anne Neilan, MD, MPH (MPEC)** was awarded funding for the project *Diagnosing and preventing HIV infection in adolescents and young adults in the US: clinical impact and cost-effectiveness* (2018-2023)
- ▶ **Ashley Nelson, PhD (CORE)** was awarded funding for the project *Reducing Persistent Fatigue Following Hematopoietic Stem Cell Transplantation* (2021-2026)
- ▶ **Long Nguyen, MD, MS (CTEU)** was awarded funding for the project *Dietary strategies for rational manipulation of the gut microbiome in inflammatory bowel disease* (2020-2025)
- ▶ **Crystal North, MD, MPH (MPEC)** was awarded funding for the project *The influence of air pollution on lung health among people living with HIV* (2020-2025)



Jamie Jacobs, PhD



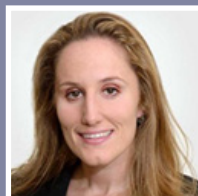
April Jorge, MD



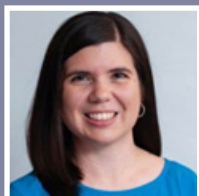
Christina Luberto, PhD



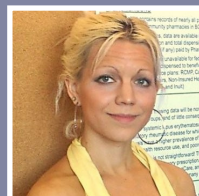
Ryan Mace, PhD



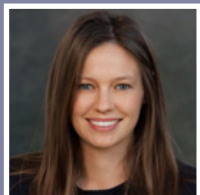
Jennifer Manne-Goehler, MD, ScD



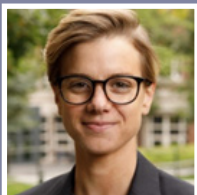
Suzanne McCluskey, MD



Natalie McCormick, PhD



Jessica McCurley, PhD, MPH



Alex McDowell, PhD, MPH, MSN, RN



Amir Mohareb, MD



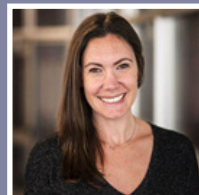
Anne Neilan, MD, MPH



Ashley Nelson, PhD

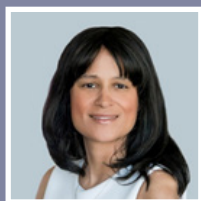


Long Nguyen, MD, MS



Crystal North, MD, MPH

- ▶ **Giselle Perez-Lougee, PhD** (HPRIR) was awarded funding for the project *Building Resiliency Among Survivors of Cancers Diagnosed During Adolescence and Young Adulthood (AYAs): A Relaxation Response Resiliency Program for AYAs (3RP-AYA)* (2017-2023)
- ▶ **Bridget Perry, PhD, MPH** (HDSC) was awarded funding for the project *Improving shared decision-making surrounding dysphagia management for persons diagnosed with Amyotrophic Lateral Sclerosis* (2022-2027)
- ▶ **Laura Petrillo, MD** (CORE/CASI) was awarded funding for the project *Optimizing Supportive Care for Patients with Metastatic Lung Cancer in the Era of Precision Oncology* (2022-2027)
- ▶ **Altaf Saadi, MD** (DRU) was awarded funding for the project *A Culturally-Adapted, Trauma-Informed Cognitive Rehabilitation Intervention for Asylum-Seekers and Refugees with Traumatic Brain Injury* (2022-2027)
- ▶ **Sachin Shah, MD, MPH** (CASI/DGIM) was awarded funding for the project *Individualizing Anticoagulant use in Older Adults with Atrial Fibrillation* (2021-2026)
- ▶ **Tracey Simon, MD** (CTEU) was awarded funding for the project *Aspirin and Novel Lipid Mediators in Nonalcoholic Fatty Liver Disease* (2019-2024)
- ▶ **Kyle Staller, MD, MPH** (CTEU) was awarded funding for the project *The Role of Fiber in the Etiopathogenesis of Fecal Incontinence* (2020-2025)
- ▶ **Zachary Wallace, MD, MSc** (RAICEP) was awarded funding for the project *Impact of ANCA Type and Rituximab vs. Cyclophosphamide on Cardiovascular Risk, Mortality, and Quality-Adjusted Life Years in ANCA-Associated Vasculitis* (2018-2023)
- ▶ **Kenneth Westerman, PhD** (CTEU) was awarded funding for the project *Improved detection of gene-diet interactions via longitudinal data, metabolomic proxies, and polygenic scores* (2022-2027)
- ▶ **Jenny Zhen-Duan, PhD** (DRU) was awarded funding for the project *Adverse childhood experiences and alcohol misuse in Latino adolescents: testing biopsychosocial and cultural mechanisms* (2022-2027)



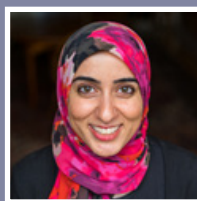
Giselle Perez-Lougee, PhD



Bridget Perry, PhD, MPH



Laura Petrillo, MD



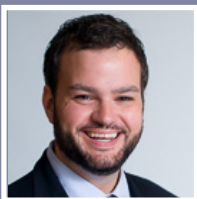
Altaf Saadi, MD



Sachin Shah, MD, MPH



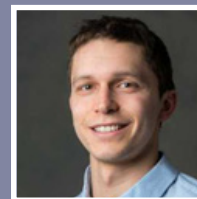
Tracey Simon, MD



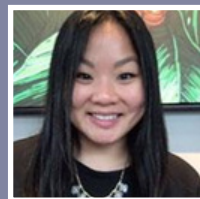
Kyle Staller, MD, MPH



Zachary Wallace, MD, MSc



Kenneth Westerman, PhD

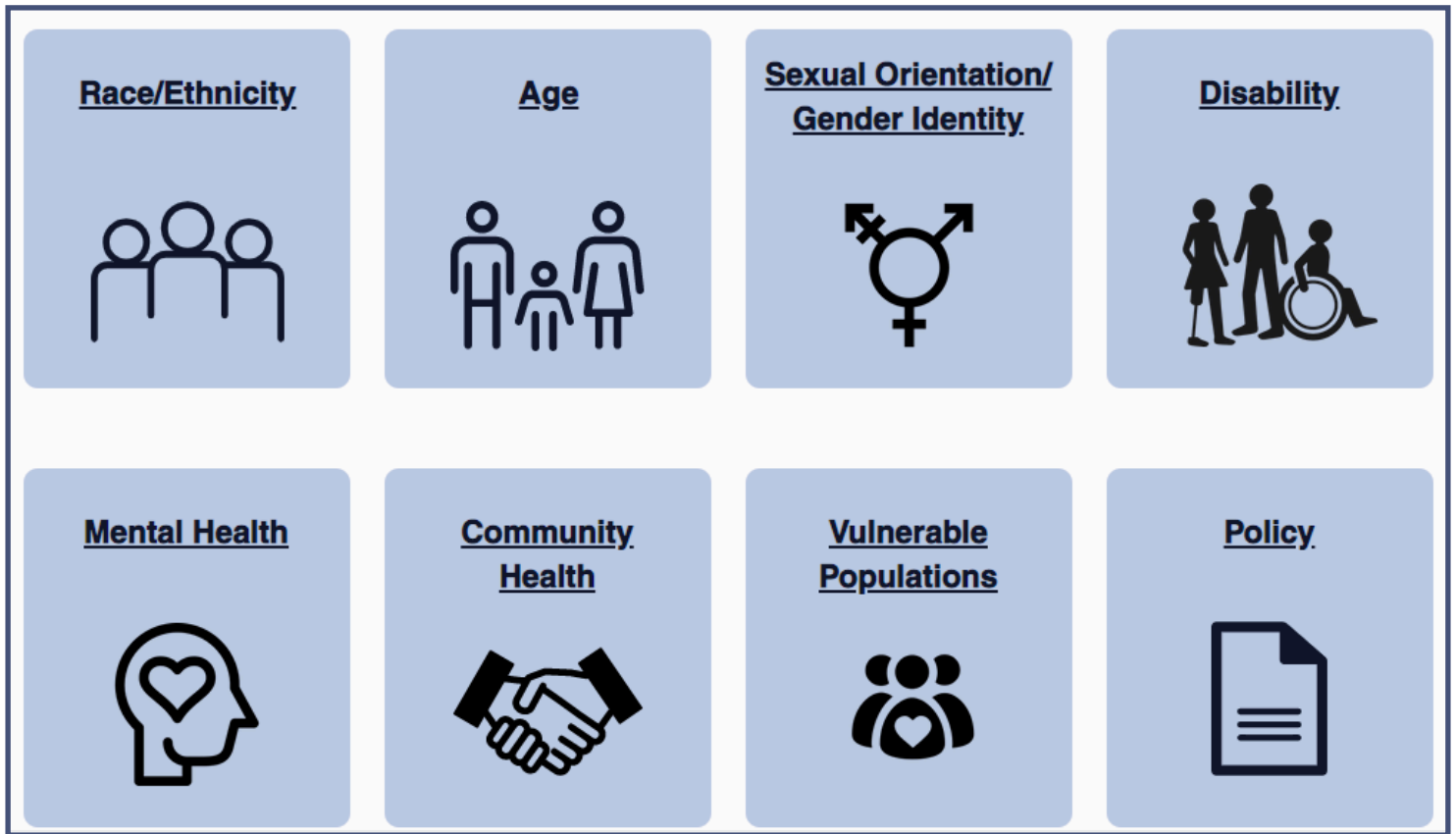


Jenny Zhen-Duan, PhD

## MENTORING POPULATION AND HEALTH CARE DELIVERY TEAM SCIENTISTS BEYOND MONGAN INSTITUTE FACULTY

Mongan Institute Faculty provide research training and mentoring to early research career investigators across MGH Departments and affiliates. Mentored researchers include faculty from the departments of Medicine, Psychiatry, Surgery, Neurology, Radiology, Dermatology, Urogynecology, OB/GYN, Anesthesia, Family Medicine, Emergency Medicine, Speech Pathology, Nursing, Occupational Therapy, Interventional Cardiology, the MGH Cancer Center, Chan-HSPH, Health Policy, Center for African Studies, MGH Institute for Health Professions, Broad Institute, McClean Hospital, Cambridge Health Alliance, Brigham and Women's Hospital, Mass General Brigham Health, and Beth Israel Deaconess.





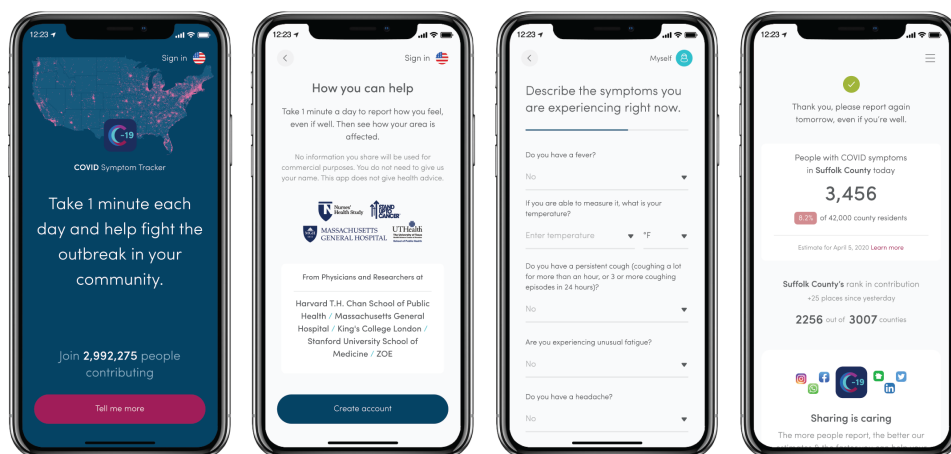
## ADVANCING HEALTH EQUITY DELIVERY SCIENCE

Supporting our core mission “dedicated to achieving health equity and improving the lives of people with complex health needs,” our program of health equity research has grown to embrace the full range health disparities - spanning race and ethnicity, age, sexual orientation and gender identity, disability, mental health, socioeconomic status, and social determinants of health (<https://www.monganinstitute.org/equity>). Over the past several years, we have developed a cross-institute initiative embracing health equity and health disparity research that leverages the strengths of our component research centers. Research focused on health disparities and health equity within at Mongan include (but are not limited to) research in mental health and the addictions; aging and palliative care; sexual orientation and gender identity; mental and physical disabilities; homelessness; HIV; social determinants of health; and cancer prevention and treatment.

The **Disparities Research Unit (DRU)** at the Mongan Institute is specifically dedicated to training, mentoring and research in health disparities associated with race and ethnicity and applies innovative methods to improve and measure physical and mental health outcomes for diverse individuals and communities. Recent examples include several NIH-funded clinical trials assessing the effectiveness of wellness and mental health interventions delivered by Community Health Workers in English, Spanish, Mandarin, and Cantonese. In addition, the DRU is actively involved in national initiatives, including a recent Robert Wood Johnson funded initiative conducting a comprehensive scoping review, online surveys, and in-depth qualitative interviews with stakeholders across numerous institutions to advance racial/ethnic equity in the academic health sciences.

## COVID-19

As researchers, we have also been transformed in ways that we could not have imagined just years ago. We witnessed accelerated team science that created vaccines and transformed health care delivery at an unprecedented pace. Examples of ground-breaking projects at the Mongan Institute span epidemiological and clinical cohort studies to projects addressing health disparities and novel approaches to health care delivery of prevention and treatments. The **Clinical and Translational Epidemiology Unit** applied innovative methods to rapidly develop a COVID Symptom Tracker APP to identify risk factors and track the course of COVID-19.



Under the leadership of Dr. Ken Freedberg as Director and Dr. Ingrid Bassett as Co-Director, the **Medical Practice Evaluation Center** team adapted prior work on HIV to develop the Clinical and Economic Analysis of COVID-19 interventions (CEACOV) model to predict the costs and outcomes of different prevention and treatment strategies spanning diverse settings including homeless shelters, college campuses, and communities in South Africa. Among the many examples leveraging this model include: demonstrating the cost-effectiveness of screening adults in Massachusetts led by Drs. Neilan and Ciaranello; assessing the impact of different strategies for managing COVID-19 among sheltered homeless adults led by Drs. Baggett and Freedberg; a study of testing and prevention of COVID-19 on college campuses, led by Drs. Losina and Freedberg; and an analysis of approaches to prevent the spread of COVID-19 in South Africa led by Drs. Reddy and Siedner

Mongan Institute researchers also engaged in a rapid PCORI (Patient-Centered Outcomes Research Institute) study focused on prevention of COVID-19 and improving vaccine uptake in residents and staff of group homes for people with serious mental illness and developmental and intellectual disabilities. This study engaged in team science including Mongan Institute faculty researchers from the **Health Policy Research Center**, the **Medical Practice Evaluation Center**, **Division of General Internal Medicine Research Program**, **Psychiatry**, **Biostatistics**, and the **MGH Department of Pediatrics and Down Syndrome Program**.

Dr. Bassett is co-PI of the Boston COVID Recovery Cohort (BCRC), a long COVID research collaboration which is part of RECOVER (<https://recovercovid.org>) a nation-wide, comprehensive \$1.15-billion National Institutes of Health long COVID study. Andrea Foulkes, ScD, leads the RECOVER Data Resource Core. Drs. Bassett and Foulkes, along with their colleagues, coordinated an MGH COVID-19 data repository to support the rapid turnover of available

## DEVELOPING NEW RESOURCES FOR RESEARCHERS: FROM DATA SCIENCE TO DELIVERY SCIENCE

**EPICORE** (EPIde miology CO nsultation and bioREpository Program) was launched in 2022 to support clinical and translational investigators in epidemiological study design, data analysis, and biobanking services, assistance in developing protocols, data analysis, analytics support, and training in statistical methods. In addition, EPICORE aids in sample collection protocols and sample processing, storage, and tracking in the **Clinical and Translational Epidemiology Unit** biobanking laboratory space. (<https://www.mghcteu.org/aboutepicore>)



The **Implementation Science Resource Navigator** was created by faculty of the Mongan Institute and the Implementation Science Center for Cancer Control Equity to support implementation science researchers and practitioners in identifying and navigating relevant implementation research resources. This open-source guide includes a curated set of key websites with guides, videos, and interactive tools covering the field of implementation science including an introduction the field for researchers new to the area, as well as resources for more experienced researchers engaged in designing and conducting implementation research studies. (<https://www.implementation-guide.com/>)



## THE MONGAN INSTITUTE

### EDUCATION, TRAINING AND SEMINARS

Developing the next generation of population and health care delivery scientists is a major priority of the Mongan Institute. Mongan provides mentored research training experiences to pre-doctoral, post-doctoral, and clinical research fellows. In addition, Mongan Institute faculty provide mentored research training experiences to numerous residents, medical students, and clinical professions students.

#### SEMINARS

The Mongan Institute hosts over 20 seminars and research meetings across its component centers and programs. In addition to the 13 seminars/meetings within the individual centers and programs that provide extraordinary opportunities for all of us to learn and exchange ideas, there are several Mongan-wide seminars, described below and highlighted on our website (<https://www.monganinstitute.org/research-seminars-training>).

#### ANNUAL BLUMENTHAL AND HADDAD LECTURES

Every year, the Mongan Institute supports two special Grand Round Honorary Lectures: the Blumenthal Lecture and the Haddad Lecture. In October of 2021, the Blumenthal Lecture was presented by Sandro Galea, MD, MPH, DrPH, Dean and Robert A. Knox Professor of Boston University School of Public Health. In December of 2021, the Haddad Lecture was presented by Joel Teitelbaum, JD, LL.M., Professor of Public Health and Law at the George Washington University.

#### RESEARCH TRAINING SEMINAR: NEXTGEN

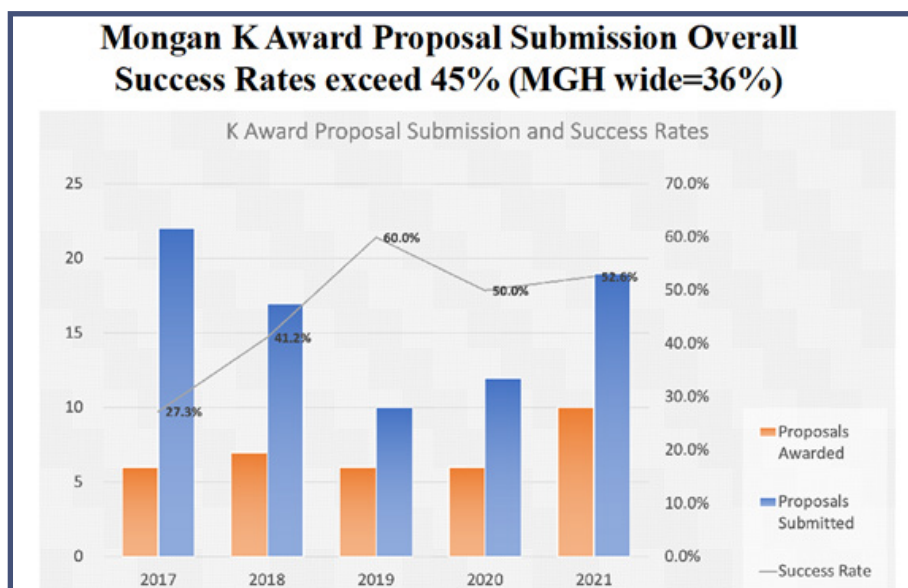
**STEPHEN BARTELS, MD, MS, INGRID BASSETT, MD, MPH, ANDREA CIARANELLO, MD, JENNIFER HAAS, MD, MSC, KEN FREEDBERG, MD, MSC, AND JOSHUA METLAY, MD, PhD**

This seminar focuses on assisting junior faculty, early career investigators in a group format and on presenting formative or developing work with the goal of achieving a K (research career development award), research project grants (R21, R32, R01), and related grants. Participants are encouraged to conduct “dry-runs” for feedback on presentations at large research meetings.

#### MOCK K REVIEWS

**KEN FREEDBERG, MD, MSC**

This internal review process provides brief reviews and feedback to early career investigators before submitting K awards. It has been a critical component of refining proposals before they are formally submitted, leading to a high success rate of K awards among our junior faculty.



## IMPLEMENTATION SCIENCE SEMINARS

**STEPHEN BARTELS, MD, MS, RACHEL VANDERKUIK, PhD, AND KATHY LYONS, PhD**

The Mongan Institute hosts two separate implementation science seminar series. The “Implementation Science 101 Seminar” Series is a journal club-style introductory series consisting of core readings and topical discussions that provides an introductory overview of the field for those new to the field. A second seminar “Applying Implementation Research Methods” (AIRMS) is for researchers planning or developing research studies and provides a forum for presenting, discussing, and getting feedback on research ideas and developing implementation research proposals. These seminars make use of the Implementation Science Resource Navigator developed by Mongan Institute to support researchers (<https://www.implementation-guide.com/>).



Stephen Bartels, MD, MS



Rachel Vanderkruik, PhD



Kathy Lyons, PhD

## RESEARCH IN PROGRESS SEMINARS

**VICKI FUNG, PhD AND ZACH WALLACE, MD, MSc**

These twice-monthly seminars provide a forum for developing research projects or completed projects that is highly attended academic activity for Mongan-affiliated faculty and fellows to share research in various stages of progress and to receive collegial and constructive feedback.



Vicki Fung, PhD

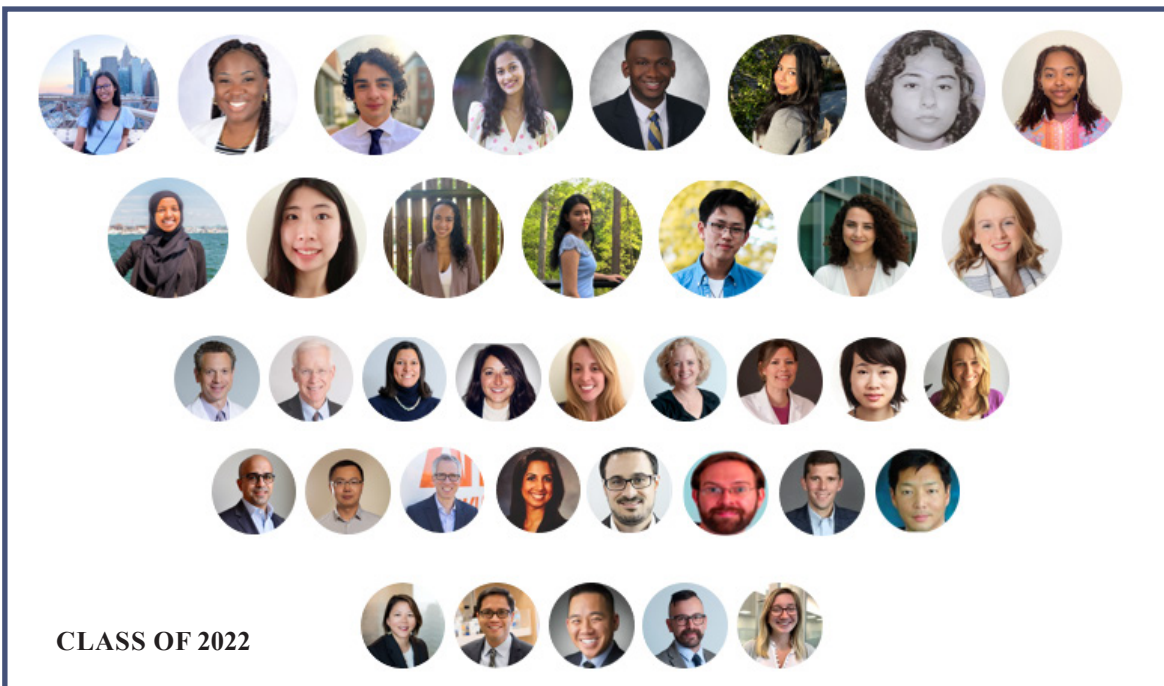


Zach Wallace, MD, MSc

Both the Research-in-Progress Series and Implementation Science Methods Seminars aim to help researchers develop a competitive implementation research proposal. The format consists of group discussions of developing specific aims pages presented by seminar participants who are planning to submit an implementation research proposal. In addition, we briefly discuss relevant key research papers emphasizing equity-focused implementation science and critique example specific aims pages of funded implementation research proposals and related methods papers.


## MGH COVID CORPS BIOMEDICAL RESEARCH INTERNSHIP PROGRAM

Funded by the Mongan Institute and Mass General Department of Medicine and led by the Disparities Solutions Center, the Mongan Institute established the MGH COVID Corps Research Internship Program in the summer of 2020 when over half of all internship opportunities were cancelled due to the COVID-19 pandemic. In this time of widespread disruption, we provided a paid, summer opportunity to conduct COVID-related research, specifically targeting historically underrepresented students in the biomedical research sciences.




## FURTHER COMMUNICATING OUR IMPACT: “MONGAN SCIENCE MINUTES”

In addition to prolific publication of peer reviewed articles, we recently launched a new initiative to briefly communicate key findings highlighting selected recent studies in “Mongan Science Minutes.” Shown below are examples of these rapid summaries of high impact studies distributed in our weekly newsletter, our monthly updates (<https://www.monganinstitute.org/monthly-updates>) and through social media platforms, such as Twitter.




### MONGAN SCIENCE MINUTE


#### *Patients Who Reviewed a Decision Aid Prior to Major Orthopaedic Surgery Reported Higher Trust in Their Surgeon*




Elizabeth M. Kelly, MD  
Orthopaedic Surgeon, Brigham Young University



K. J. Cole, PhD  
Health Trust and Quality Center



Yuhong Chang, PhD  
Liaison and General Internal Medicine



Michael J. Murray, MD  
Liaison and General Internal Medicine

- Decision aids (DAs) are used to ensure patients are informed and involved in decision-making process, but other factors such as trust or regret are seldom measured compared to DAs when determining decision quality
- The aim of this study is to determine whether patients given a DA prior to orthopaedic surgery have greater trust and lower regret at 6 months postoperatively
- The proportion of patients who reported complete trust was 50.9% among those with no DA review and 63.4% among those with DA review suggesting that the use of DAs by surgeons with their patients is associated with increased trust.

Brodney S. Sepusha, K. Chang Y, Moulton B, Barry MJ.  
<https://pubmed.ncbi.nlm.nih.gov/33701157/>

@MonganInstitute  
monganinstitute.org



### MONGAN SCIENCE MINUTE

#### *Comparative Effectiveness of Postdischarge Smoking Cessation Interventions for Hospital Patients: The Helping HAND 4 Randomized Clinical Trial*



Nancy A. Rigotti, MD  
Assistant Professor of Medicine



Elizabeth M. Kelly, MD  
Orthopaedic Surgeon, Brigham Young University



Yuhong Chang, PhD  
Liaison and General Internal Medicine



Robert A. Hays, MD  
Liaison and General Internal Medicine

- This randomized clinical trial of 1409 hospitalized smokers compared 2 models for delivering tobacco cessation treatment after discharge: health system–based care or referral to a community-based quitline
- In this randomized clinical trial, the health system-based model was superior to the community-based quitline model throughout the 3 months of active treatment. However, biochemically verified tobacco abstinence rates were not significantly different between groups at the 6-month follow-up.
- This study supports the short-term effectiveness post-discharge smoking cessation for hospital patients and the need for effective interventions for sustaining long-term smoking cessation.

Rigotti NA, Schlicher C, Davis EW, Reagin S, Cheng Y, Kelley JMK, Kotler AE, Gilman K, Doucette VA, Levy DE, Singer DE, Tindie HA.  
<https://pubmed.ncbi.nlm.nih.gov/30736282/>

@MonganInstitute  
monganinstitute.org

## THE MONGAN INSTITUTE

### LOOKING TO THE FUTURE

---

The past few years has been marked by extraordinary growth and accomplishments by the faculty and staff of the Mongan Institute. At the same time, the way we that we work together in a transformed hybrid work environment has forever altered how we collaborate, communicate, and participate in our community of science. Coupled with ever-accelerating advances in technology and local, national, and global challenges affecting health, health care, and health equity, we are at the threshold of the next phase in the growth and development of the Institute.

*So, what are our priorities as we look to the future Mongan?*

#### **ENHANCE OUR CROSS-INSTITUTE INFRASTRUCTURE TO SUPPORT HIGH IMPACT RESEARCH**

A cross-institute research administration and management program will seek to leverage and spread best practices in research management in conjunction with peer learning and training opportunities for Mongan Institute staff. In addition, a new data management program will enhance resources with the goal of providing curated access to electronic health record and claims datasets in conjunction with analytic consultation and support for early career investigators. This new initiative will complement the recently launched EPIdemiology COnsultation and bioREpository Program (EPICORE) within the Clinical and Translational Epidemiology Unit supporting clinical and translational investigators in epidemiological study design, data analysis, and biobanking services.

#### **GROW OUR RESEARCH TRAINING AND ACADEMIC PROGRAM**

A major focus for our future will be to further develop and grow our research training program to complement our highly productive research. Along with enhancing the coordination of our existing 20 seminars and research meetings, we will be launching new initiatives including research methods workshops, a new first R01 grant review program, and a training program in healthcare delivery and population science. In addition, we will be supporting an initiative to reach out to affiliate programs and partner with Harvard training programs to establish new research training opportunities at the Mongan Institute for post-doctoral fellows, clinical fellows, and students.

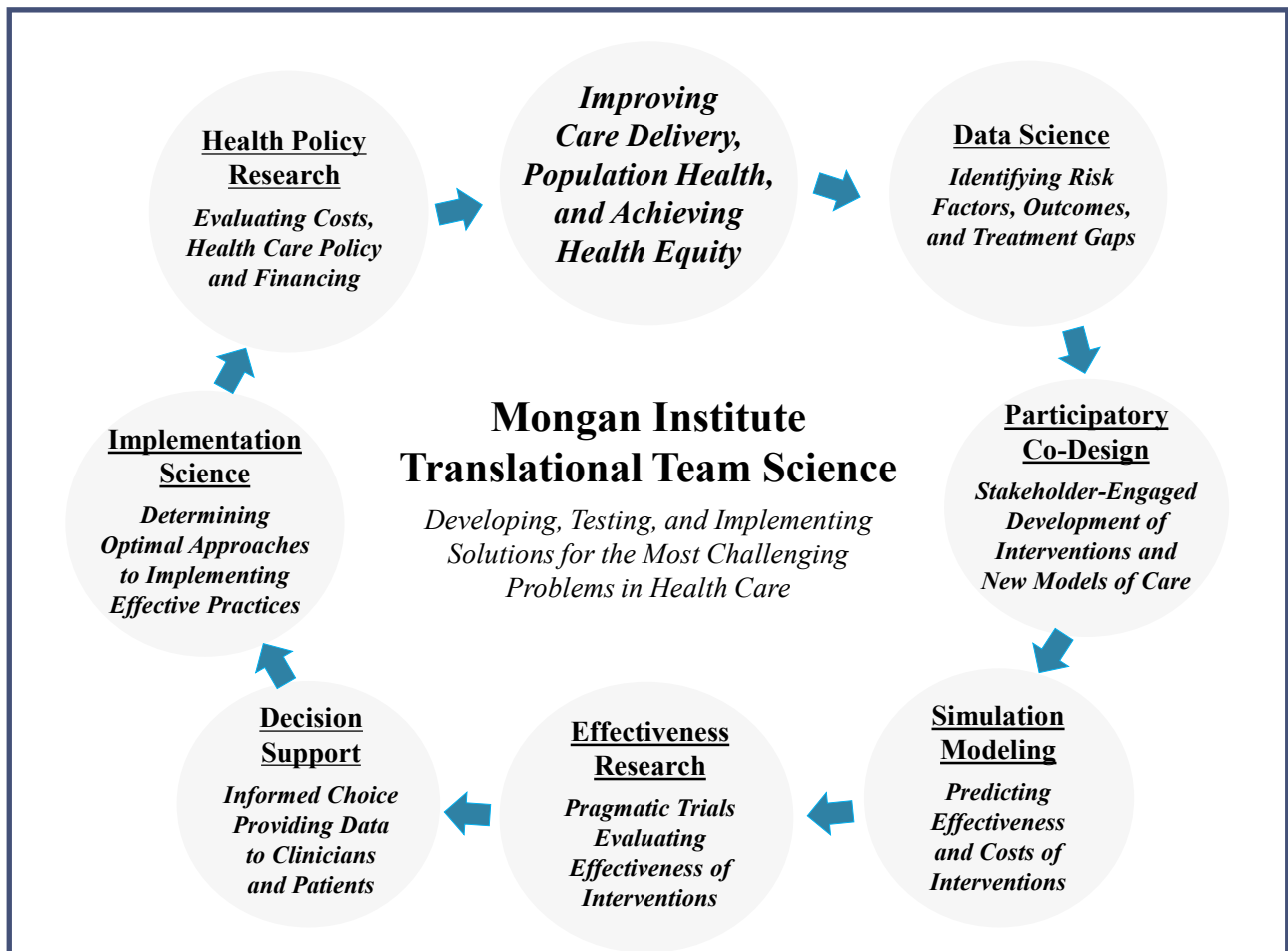
#### **FURTHER OUR COMMITMENT TO EQUITY, DIVERSITY, AND INCLUSIVENESS IN OUR FACULTY, STAFF, AND RESEARCH AGENDA**

A major priority for the Mongan Institute is our commitment to diversity and inclusiveness in our faculty and staff. Over the coming years we will continue to prioritize increasing the diversity of our faculty and staff. In addition to our work focused on addressing health disparities associated with race and ethnicity, we will continue to grow our research efforts across the spectrum of health inequities that also include those associated with sexual orientation and gender identity, disability, age, mental health, community health, vulnerable populations, and policy.



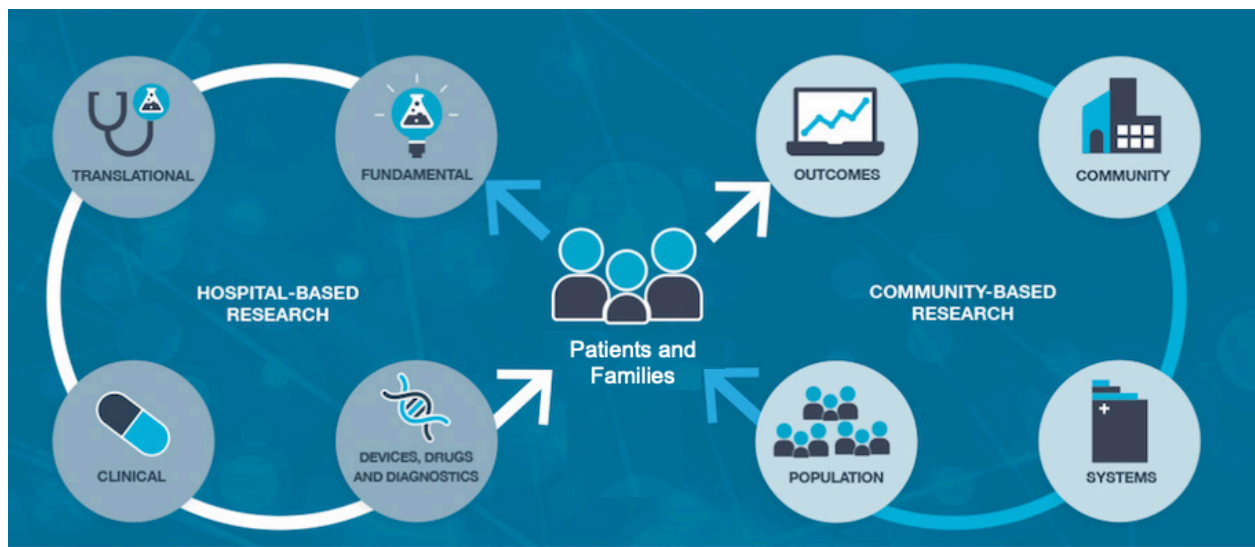
**SYNERGIZE OUR TEAM SCIENCE RESEARCH CAPACITY TO RAPIDLY IDENTIFY, DEVELOP, TEST, AND IMPLEMENT SOLUTIONS TO THE MOST CHALLENGING PROBLEMS IN HEALTH CARE**

Across our 12 centers at the Mongan Institute, we are uniquely positioned to engage in accelerated, high-impact transdisciplinary team science. As illustrated below, this begins with our capacity to engage in clinical and translational epidemiology and data science to identify critical gaps in knowledge, in conjunction with delivery science developing, and testing solutions accelerated by simulation modeling of cost-effectiveness and decision support, and finally, to scaling and spreading evidence-based interventions through implementation science coupled with informing and advancing health policy to advance health equity.



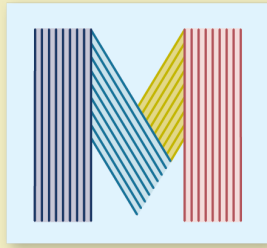
## COMPLETE THE ARC OF TRANSLATIONAL RESEARCH AT MGH BY PROVIDING A RESEARCH HOME FOR POPULATION AND HEALTH CARE DELIVERY SCIENCE

In addition to enhancing synergies and translational research collaborations within the Mongan Institute, we will leverage opportunities in partnerships outside of the institute with researchers across departments at MGH and affiliate Harvard programs to rapidly bridge discoveries in basic and clinical research to applications in populations and in health care delivery. This work will advance new paradigms and methods in conducting collaborative accelerated translational research from bench to bedside, to clinic and community, and to populations.



As we look to the future, it can be overwhelming to consider the profound challenges to substantially and measurably improving population health, health care delivery, and health equity. Yet in many instances, the solutions are only limited by our imagination, our ability to innovate and collaborate, and our capacity leverage the depth and breadth of expertise in our community of science. As we consider the Mongan Institute’s ambitious mission - “dedicated to achieving health equity and improving the lives of people with complex health needs through research and training in population and health care delivery team science” - Helen Keller’s wisdom comes to mind: "Alone we can do so little; together we can do so much." It is in this spirit that this Mongan Institute Impact Report provides evidence of the power of community and sets the stage for our future.





Mongan Institute  
Massachusetts General Hospital  
100 Cambridge Street, Suite 1600  
Boston, MA 02114

*Website*

[www.monganinstitute.org](http://www.monganinstitute.org)

*Email*

[MGHMonganInstitute@mgh.harvard.edu](mailto:MGHMonganInstitute@mgh.harvard.edu)

*Twitter*

[@MonganInstitute](https://twitter.com/MonganInstitute)

SUBSCRIBE TO OUR MONTHLY NEWSLETTER AT [MONGANINSTITUTE.ORG](http://MONGANINSTITUTE.ORG)  
SUPPORT US AT [MONGANINSTITUTE.ORG/SUPPORT-US](http://MONGANINSTITUTE.ORG/SUPPORT-US)